

Perfix™ Spinal System



Enhancement of Design



The Perfix Spinal System is a low-profile, polyaxial, pedicle screw system that provides three-dimensional adjustability for simple, stable construct assembly.

Polyaxial capabilities

Rounded screw head with superior angulation allows polyaxial capabilities after screw placement.

Anti-cross threading

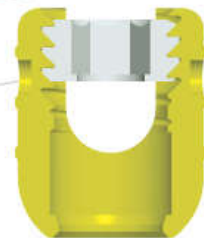
Buttress threaded set screw reduces the potential for cross-threading.

Greater flexibility

Short run-on-rod and low profile provide greater flexibility in construct assembly.

Riskless Design

No hex rounding & No cross threading of the Set Screw
No complication but efficiency self tap of the Screw



Ergonomic Instrument Design

The Perfix Spinal System instruments are designed to enhance clinical results and surgical efficiency. Insightful design instruments can reduce the operation time.

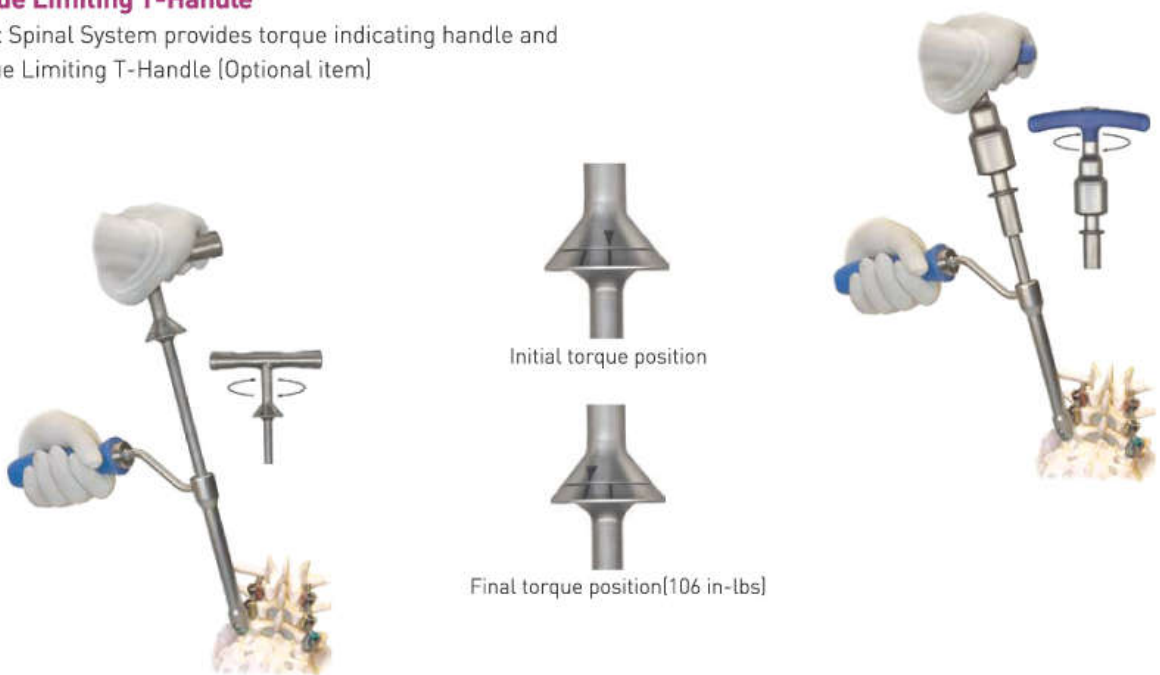
Poly Screw Driver

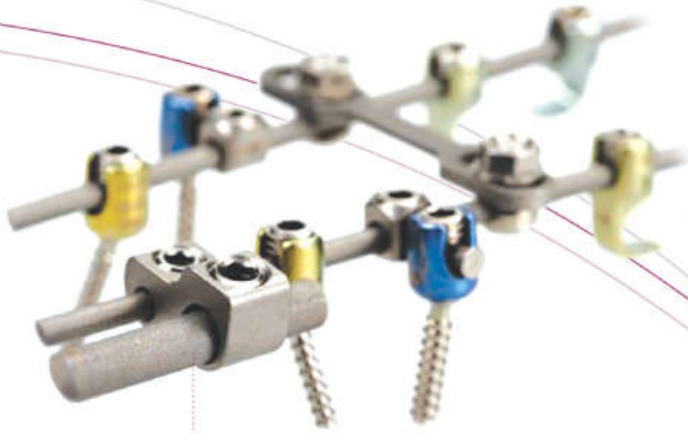
No Screw run-out & Easy inserting of the pedicle screw.



Torque Limiting T-Handle

Perfix Spinal System provides torque indicating handle and Torque Limiting T-Handle (Optional item)





Prima OCT System



Spinal Hook System



Perfix Iliac Screw System

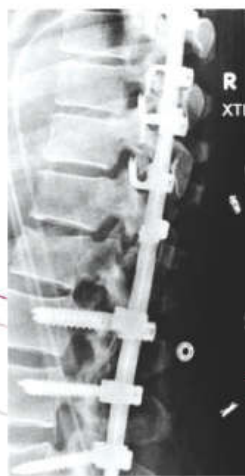


Neo IC Cage

Versatility Options

Perfix Spinal System includes additional versatile options.

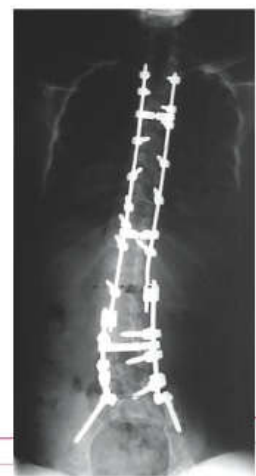
Prima OCT System	Conjunction of Cervical & Thoracic Spine
Spinal Hook System	Hooks are compatible with the Perfix Spinal System.
Perfix Iliac Screw	Perfix Spinal System provides an Auxiliary Iliac Screw Set.
Perfix LIS System	Perfix Spinal System provides a cannulated screw set for Less Invasive Surgery.



Trauma Solutions
Perfix™ Spinal System Hybrid Implant Construct



Degenerative Solutions
Perfix™ Spinal System Multi Axial Screw Construct



Deformity Solutions
3.3mm-6.0mm Construct with Iliac Fixation



POLY-SCREW ASSEMBLY

PART No	SIZE	Q'ty	PART No	SIZE	Q'ty
SNA4530	4.5x30mm	6EA	SNA6540	6.5x40mm	12EA
SNA4535	4.5x35mm	6EA	SNA6545	6.5x45mm	12EA
SNA4540	4.5x40mm	6EA	SNA6550	6.5x50mm	6EA
SNA5530	5.5x30mm	6EA	SNA7535	7.5x35mm	4EA
SNA5535	5.5x35mm	6EA	SNA7540	7.5x40mm	8EA
SNA5540	5.5x40mm	6EA	SNA7545	7.5x45mm	8EA
SNA5545	5.5x45mm	6EA	SNA7550	7.5x50mm	6EA
SNA6535	6.5x35mm	6EA			

REDUCTION SCREW D TYPE

PART No	SIZE	Q'ty	PART No	SIZE	Q'ty
SNA5640	5.5x40mm	4EA	SNA6640	6.5x40mm	4EA
SNA5645	5.5x45mm	4EA	SNA6645	6.5x45mm	4EA
SNA5650	5.5x50mm	2EA	SNA6650	6.5x50mm	2EA

PEDICLE SCREW MONO TYPE

PART No	SIZE	Q'ty	PART No	SIZE	Q'ty
SNM4530	4.5x30mm	4EA	SNM6540	6.5x40mm	10EA
SNM4535	4.5x35mm	4EA	SNM6545	6.5x45mm	10EA
SNM4540	4.5x40mm	4EA	SNM6550	6.5x50mm	4EA
SNM5530	5.5x30mm	4EA	SNM7535	7.5x35mm	4EA
SNM5535	5.5x35mm	4EA	SNM7540	7.5x40mm	6EA
SNM5540	5.5x40mm	4EA	SNM7545	7.5x45mm	6EA
SNM5545	5.5x45mm	4EA	SNM7550	7.5x50mm	4EA
SNM6535	6.5x35mm	4EA			

SET SCREW C TYPE

PART No	SIZE	Q'ty
SN3020	M10x1.5	30EA

Implant



REDUCTION SCREW MONO TYPE

PART No	SIZE	Q'ty	PART No	SIZE	Q'ty
SNM5640	5.5x40mm	4EA	SNM6640	6.5x40mm	4EA
SNM5645	5.5x45mm	4EA	SNM6645	6.5x45mm	4EA
SNM5650	5.5x50mm	2EA	SNM6650	6.5x50mm	2EA

ROD

PART No	SIZE	Q'ty	PART No	SIZE	Q'ty
SG1604	6.0x40mm	2EA	SG1610	6.0x100mm	2EA
SG1605	6.0x50mm	2EA	SG1612	6.0x120mm	2EA
SG1606	6.0x60mm	2EA	SG1615	6.0x150mm	2EA
SG1607	6.0x70mm	2EA	SG1620	6.0x200mm	2EA
SG1608	6.0x80mm	2EA	SG1630	6.0x300mm	2EA
SG1609	6.0x90mm	2EA	SG1640	6.0x400mm	2EA

CURVED ROD

PART No	SIZE	Q'ty	PART No	SIZE	Q'ty
SG1904	6.0x40mm	2EA	SG1908	6.0x80mm	2EA
SG1905	6.0x50mm	2EA	SG1909	6.0x90mm	2EA
SG1906	6.0x60mm	2EA	SG1910	6.0x100mm	2EA
SG1907	6.0x70mm	2EA			

TRANSVERSE LINK COLLET TYPE

PART No	SIZE	Q'ty	PART No	SIZE	Q'ty
SGA2433	33-40	2EA	SGA2450	50-60	2EA
SGA2440	40-50	2EA	SGA2460	60-70	2EA

Instrument



CASE

No	Part No	Article	Q'ty	No	Part No	Article	Q'ty
1	SN001	Perfix Instrument Case	1EA	7	SN002	Perfix Implant Case	1EA
2	SN001-A	Perfix Instrument Upper Tray	-	8	SN002-A	Perfix Implant Upper Tray	-
3	SN001-B	Perfix Instrument Middle Tray	-	9	SN002-B	Perfix Implant Lower Tray	-
4	SN001-C	Perfix Instrument Lower Tray	-	10	SN002-C	Perfix Implant Cover	-
5	SN001-D	Perfix Instrument Cover	-	11	SN002-D	Perfix Implant Container	-
6	SN001-E	Perfix Instrument Container	-				



U&I CORPORATION

FDA KFDA CE
0434

Approved by FDA, KFDA, CE www.youic.com

529-1, Yonghyun-dong, Uijeongbu-si, Gyeonggi-do, Korea 480-050

Phone +82 31 852 0102 Fax +82 31 852 9025 E-mail information@youic.com